

ALTO* Sustainability is powering sustainable and ESG investing, enabling institutional investors, asset and wealth managers to easily access and integrate sustainability data into the ALTO* platform to align investment decisions with their ESG and climate goals.

ESG investing challenges

Nowadays, ESG represents a growing demand and a major organizational challenge that requires rethinking investment strategies, portfolio analysis and decision-making tools. Technology, as ALTO* Sustainability, now offers relevant and adapted solutions for developing, building, and deploying ESG policies to empower sustainable and social investing.

REGULATORY COMPLIANCE

- Define, implement and control responsible investment policies.
- Comply with new sustainable finance regulations, including SFDR, EU Taxonomy, Mifid 2, etc.

ESG BUSINESS STRATEGY

- Offer to retail and institutional investors sustainable investment solutions in line with their sustainability preferences.
- Produce accurate and reliable client reporting.

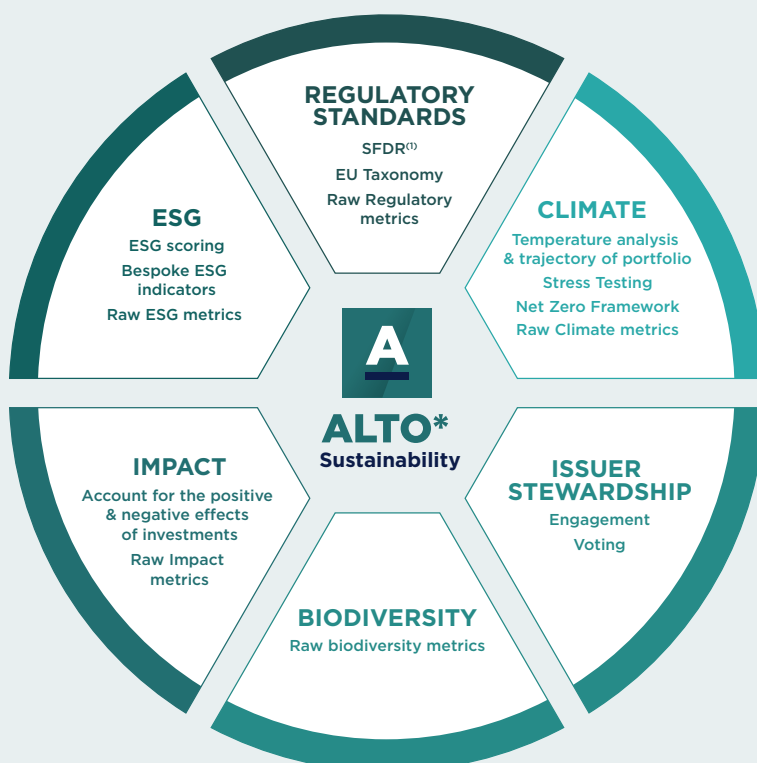
DATA MANAGEMENT

- Tackle data management challenges from providers' selection, integration, monitoring to dissemination in Portfolio Management System.
- Implement efficient data governance and processes.

TECHNOLOGY

- Benefit from scalable, flexible and industrial tools to support portfolio management, compliance risk, client reporting and data management.
- Build and manage standard and bespoke sustainability methodologies.

Amundi Technology solution



Key figures

+55 experts
dedicated to **ESG data, analysis and solution**

+25 IT experts
for **ALTO* Sustainability**

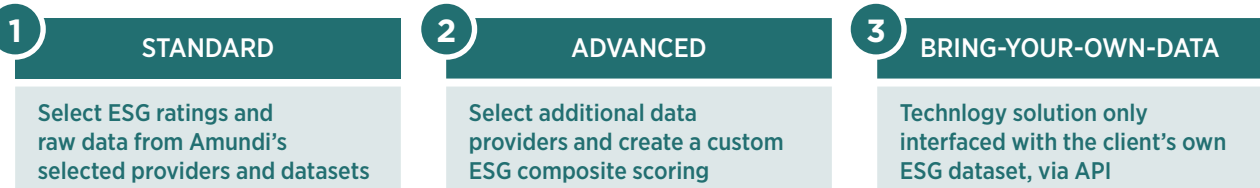
Connectivity with
20+ ESG data providers
for ESG, climate, regulatory and SFDR datasets, etc.

ALTO* Sustainability functionality

DATA OFFERING

Amundi ESG data services enable clients to delegate data management to a trusted expert, benefiting from:

- **Amundi know-how** with a **deep and longstanding ESG** and data management **knowledge**.
- A **single point of access** for all sustainable data from providers covering ESG, climate and regulatory analytics.
- A suite of value added services from **selection, sourcing, processing, through to matching and integration via a choice of operating modes**:



ALTO* PLATFORM

ALTO* Sustainability centralizes all sustainable data into the **core investment data set** and across the **integrated front-to-back workflow**:

- Give portfolio managers, analysts and operations experts the data and tools needed to consolidate ESG and sustainability analytics at issuers, holding and portfolio level.
- Create custom ESG scoring methodology.
- Disseminate data into the entire ALTO* platform:



Amundi Technology value proposition



Contact us | amundi.technology@amundi.com

Follow us | on LinkedIn

*Amundi Leading Technologies & Operations

Produced by Amundi Technology Marketing – April 2023

This document is intended exclusively for professional clients and/or eligible counterparties, within the meaning of European Directive No. 2004/39 of 21 April 2004 on the markets in financial instruments ("MiFID"). This document is not intended for citizens or residents of the United States of America or to any "U.S. Person", as this term is defined in SEC Regulation S under the U.S. Securities Act of 1933. This document is provided for information purposes only and for the exclusive use of the person who receives it. Under no circumstances does it constitute a purchase offer, investment advice or a solicitation to sell, nor does it form the basis of a contract or commitment of any kind whatsoever. Amundi Asset Management accepts no liability is subject to change without notice. It is deemed whatsoever, whether direct or indirect, that may arise from the use of information contained in this document. Amundi may in no way be held liable for any decision or investment made on the basis of information contained in this document. This information may not be copied, reproduced, modified, translated or distributed without the prior written approval of Amundi AM. This document has not been reviewed by any supervisory authority. The information provided in this document accurate as at 31 December 2020.

Amundi Technology, a business units of Amundi Asset Management, French "Société par Actions Simplifiée"- SAS with capital of €1,143,615,555 - Portfolio Management Company approved by the AMF under number GP 04000036 - Registered office: 91-93, boulevard Pasteur - 75015 Paris - France - 437 574 452 RCS Paris. Design and production: Amundi's Graphic Studio - Communication Department - 04/2023.